

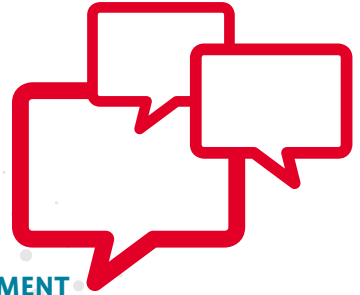
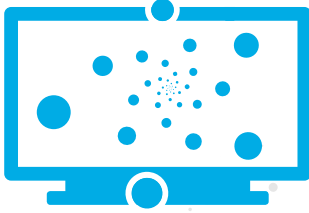


Province  
de Liège

Enseignement

# The Higher Education Institution of the Province of Liège

## Erasmus Students' Guide



AGRONOMY - ENVIRONMENT  
CHEMISTRY - BIOCHEMISTRY - BIOTECHNOLOGY  
COMMUNICATION  
CIVIL ENGINEERING - SURVEYOR  
LAW  
ECONOMICS  
EDUCATION  
ELECTROMECHANICS - MECHANICS - ENERGY  
COMPUTER GRAPHICS  
COMPUTING - ELECTRONICS  
PARAMEDICAL  
SOCIAL





# Table of Contents

Welcome	2
Organizational Structure of Studies in the French Community The HEI of the Province of Liège : 1 school and 12 areas of education	3
Structure of the HEI	4
Discover the Province of Liège	6
Practical Information	12
Discover Belgium	15
Glossary	18
Map	21
Notes	22

The Higher Education Institution of the Province of Liège awards a wide range of Master and Bachelor Degrees in many subjects.

Whatever the field of study, our Institution offers trainings combining theoretical and practical aspects as it allows students to carry out field placements and meet the professionals.

From their very first year of studies, students are confronted with the real and professional world and are provided with efficient tools to do so.

Though it remains a «school within the city», our Institution is fully involved in the Bologna Process and aims to open up to the whole of Europe. It has been collaborating, for years now, with other European HEI's and has developed fruitful mobility programmes for students.

Proud to be known as a welcoming institution, the Higher Education Institution of the Province of Liège is fully integrated in the new European Higher Education Area.

A handwritten signature in black ink, appearing to read 'Toni Bastianelli', with a horizontal line drawn through it.

Toni BASTIANELLI  
Head of Institution

## Organizational Structure of studies in the French Community

Short-term trainings are organized in a three-or-four-year cycle (i.e. 180 or 240 credits) leading to a Bachelor's degree.

Long-term trainings have a first cycle of 3 years (180 credits) leading to a Bachelor's degree as well as a second cycle of 1 or 2 year(s) (60 or 120 credits) leading to a Master's degree.

Attending lessons in a HEI (Higher Education Institution) entails above all integrating theory and practice and acquiring professional skills which allow you to be directly operational on the market.

### The Higher Education Institution of the Province of Liège : one school and twelve areas of education

The Haute Ecole de la Province de Liège (in French) has been created by the fusion of three Higher Education Institutions on September 15<sup>th</sup> 2007. It belongs to a neutral formal education subsidized by the Conseil des Pouvoirs organisateurs de l'Enseignement Officiel Neutre Subventionné (CPEONS).

The HEI of the Province de Liège has 6 departments (agronomy, economics, paramedical, pedagogy, social and technical) and provides courses in 12 areas of education.

## Trainings offered

### The HEI of the Province of Liège offers:

- > 33 Bachelor's degrees, 7 Master's, 15 specialisations, 23 continuing education trainings
- > More than 9,000 students, 12% of whom are foreigners
- > More than 700 teaching staff
- > 11 sites in the Province of Liège
- > More than 150 partnerships in Europe and in the world.

You can discover all our courses : <http://www.provincedeliege.be/en/hauteecole>

## School Board

The School Board of the HEI is composed of the President (Head of institution) and 6 Heads of Department.

Head of Institution:	Mr. Toni BASTIANELLI
Head of the Agronomic Department:	Mrs. Marianne DAWIRS
Head of the Business Department:	Mr. Bernard GODEAUX
Head of the Paramedical Department:	Mrs. Maria-Isabel INFANTES
Head of the Pedagogical Department:	Mrs. Annick LAPIERRE
Head of the Social Department:	Mr. Alain DELAHAUT
Head of the Technical Department:	Mr. Christian NINANE

The Students' Union represents the students, defends their interests and keeps them informed about their rights and life at the HEI.

## Academic year

The academic year is divided into 3 four-month periods:

- > The first period starts in mid-September and ends at the beginning of January;
- > The second period starts at the beginning of February and finishes at the end of May;
- > The third period starts at the beginning of June and finishes at the beginning of September.

The first two periods are devoted to educational activities. The exam periods are scheduled during the academic year (at the end of the first period, mid-January and during the third period, in June and from the end of August to the beginning of September).

There are no teaching activities on:

- > Saturdays and Sundays
- > September 27th (Day of the French Community)
- > November 1st (All Saints) and November 2nd
- > Winter Holiday (2 weeks)
- > Carnival Holiday (2 days)
- > Spring Holiday (2 weeks)
- > May 1st (Labour Day)
- > Ascension Day
- > Whit Monday

## International Office

Philippe Parmentier  
Head of International Office  
E-mail: [Philippe.Parmentier@provincedeliege.be](mailto:Philippe.Parmentier@provincedeliege.be)  
Tel.: +32 (0) 4 237 96 19  
Fax: +32 (0) 4 237 26 88

Pauline Bacquelaine  
Secretariat  
E-mail: [Pauline.Bacquelaine@provincedeliege.be](mailto:Pauline.Bacquelaine@provincedeliege.be)  
Tel.: +32 (0) 4 237 96 79  
Fax: +32 (0) 4 237 26 88

Prior to the student's arrival, our international office should have received the following documents:

- > the student's application form, filled in
- > a learning agreement
- > accommodation requirements
- > the exact date of arrival

Upon arrival: the student has to report to the international office of the department concerned, where he or she will be given all necessary information in terms of administrative documents.

Before leaving: the student has to report to the international office where he or she will receive a proof of attendance and where administrative



## Erasmus Student Network

ESN is a non-profit international student organisation. Missions : represent international students, provide opportunities for cultural understanding and self development under the principle of Students Helping Students.

13.500 members from 460 local sections in 37 countries are working on a voluntary basis in Higher Education Institutions. They offer services to 160.000 students.

Each semester the international office organizes a Welcome Week where all the Erasmus students are involved in some activities and trips around Belgium. During this week, the ESN develops a great ambiance between Erasmus students.

Besides travels, parties and many more, ESNers are always available to help Erasmus students for an emergency, to help finding a room, to give advice,...

# Discover the Province of Liège

## Welcome !

Region of industrialization and thousand-year-old principality, the Province of Liège is a land full of surprising contrasts.

- > A unique geographical location together with a remarkable road, rail, air and sea transport network.
- > High-quality natural sites and two national parks.
- > A great architectural diversity of buildings, monuments and castles.
- > Besides its commercial character, its folklore, its cultural facilities such as the 'Opéra Royal de Wallonie' and the 'Orchestre Philharmonique de Liège', the city of Liège also offers all the attractions of an art city.

## Liège and surroundings

Places to visit or to discover in Liège and surroundings:

- > Highly touristic towns: Liège, Spa, Huy, Eupen, Malmédy, Verviers, Saint-Vith, Stavelot
- > Leisure parks: 'Domaine de l'Hirondelle', the Entertainment Park in Coö, the touristic Domain of Blégny-Mine, the 'Domaine provincial de Wégimont', the 'Monde Sauvage' in Aywaille, ...
- > Wonderful lakes and rivers: the Meuse from Huy to Visé, the lakes in Eupen, Bütgenbach, Robertville and the Gileppe, ...
- > Spa-Francorchamps, a world famous motor circuit
- > About a hundred museums abounding in various treasures
- > Many sports possibilities among which 14 alpine ski tracks, 33 cross-country skiing tracks, 7 golf greens, some 5,000 km marked walks and 12 marked motor circuits
- > Gourmet food

Welcome to the Province of Liège where you are treated as a friend and offered the pleasures of an area referred to as 'the Belgian South' or 'Little Switzerland'.



Liège is definitely a great city for Erasmus students. The history of Liège is uncommon, you will always discover more about it and you will never be tired of this special city. Apart from its history, Liège also has a perfect central location:

- > Liège to Aachen: 41 KM, 25 minutes by train
- > Liège to Brussels: 98 KM, 1 hour by train
- > Liège to Amsterdam: 240 KM, 3 hours by train
- > Liège to Paris: 369 KM, 2:30 hours by train
- > Liège to London: 409 KM, 3:45 hours by train

Things you have to visit: steps of Bueren, The terraces, Place St Lambert, The porch of Liège, The Opera, The Cathedral St Paul, Liège-Guillemins Station, The peket house, The Christmas market of Liège, The ice rink, La Batte (Sunday market),...



## Student folklore

Student folklore is alive and well in Liège and surroundings. Student life is full of great activities.

- > The 'Saint-Nicolas': on the first Monday of December, the students march in procession in the streets of Liège and end up the day organizing an open air party.
- > The 'Saint-Toré': the 'Saint-Toré' is celebrated in March.  
'Li Toré' (the bull, in Walloon of Liège) is the symbol of the students of Liège who have repeatedly proved their attachment to the sculpture that can be admired on the Terrasses (Boulevard d'Avroy). When it was inaugurated, the sculpture by Léon Mignon, 'Li Toré' and its master 'Djosef' really shocked the bourgeois of Liège.  
On the second Tuesday of March, the students gather to start marching in their traditional folkloric procession with floats providing refreshing drinks. It all ends up at the 'Toré' with academic songs.

## Tourism

If you want to discover the city of Liège, you will be well advised to go to the Tourist Office where you will get a lot of information and brochures.

Office du Tourisme

Féronstrée 92 - 4000 Liège

Tel.: +32 (0) 4 221 92 21

Web site : <http://www.liege.be/tourisme> - <http://www.liege-tourisme.be>

E-mail : [office.tourisme@liege.be](mailto:office.tourisme@liege.be)

Explore the Province of Liège: the 'Fédération du Tourisme de la Province de Liège' publishes brochures which will show you its historical heritage, its natural sites, its cookery and much more!

Maison du Tourisme du Pays de Liège

Place St Lambert 35 - 4000 Liège

Tel. : +32 (0) 4 237 92 92

Web site : <http://www.ftpl.be>

E-mail : [mtpaysdeliege@provincedeliege.be](mailto:mtpaysdeliege@provincedeliege.be)

## Culture

Liège has become synonymous with culture. Cinemas, concerts, theatres, museums and festivals: Liège has it all!

The Province has an important network of culture and arts centres that organize activities such as concerts, theatre plays, cine-clubs, exhibitions and so on.

The culture centres in the Province of Liège:

<http://www2.cfwb.be/cc/Centres/LI-listeCC.htm>

Liège boasts the Chiroux library and multimedia library of the Province of Liège where you can borrow books, CDs, DVDs, video cassettes and CD-ROMs at affordable prices.

The Chiroux library:

<http://culture.provincedeliege.be/home.go?es=lc>

Multimedia library of Province of Liège :

<http://culture.provincedeliege.be/musique/mediatheque/presentation.go?es=mu>

Multimedia library of the French Community:

<http://www.lamediatheque.be>

Free 'conversation tables' are held for all the students at the HEI. Conversations in English, Spanish, Deutsch, German and also in French.

Administrative Coordinator : Anne-Françoise Gehlen

E-mail : [anne-francoise.gehlen@hepl.be](mailto:anne-francoise.gehlen@hepl.be)

Tel. : +32 (0)4 237 96 73

Do you enjoy listening to the radio and alternative radio stations? Do you dream of turning out as a speaker, an editor or a radio journalist? Then tune in to 48 FM (105.0 MHz), the radio station of the students of Liège!

<http://www.48fm.com>

## Cinema

The cinemas Le Parc, Churchill and Sauvenière run by the non-profit making association 'Les Grignoux' allow you to see arthouse films in original version. There, students of the HEI are entitled a 'cinema pass' to see films at reduced prices. Cinemas of the Kinopolis group offer more commercial films in French.

Les Grignoux: <http://www.grignoux.be>

Kinopolis : <http://www.kinopolis.be>

The University of Liège also has its own cine-club: Nickelodeon (every Thursday at 7.30).

## Museums

With museums of archeology, religious art, Walloon art, modern art, industry, history, natural sciences... there is plenty to exercise your brain cells!

Aquarium-Museum: <http://www.aquarium-museum.be>

Archeoforum of Liège: <http://www.archeoforumdeliege.be>

Curtius Museum: <http://www.grandcurtiusliege.be>

House of Metallurgy and Industry of Liège: <http://www.mmil.be>

Museum of Modern Art and Contemporary Art: <http://www.mamac.be>

Museum of Walloon Art: <http://www.museeartwallon.be>

Museum of Walloon Life: <http://www.viewallonne.be>

Treasure of the Cathedral: <http://www.tresordeliege.be>

Museums in Liège:

City museums: <http://www.liege.be/musees>

Other museums: <http://www.liege.be/visitelg/musees/noncommu/musenoco.htm>

Museums in the Walloon Region:

<http://www.lesmuseesenwallonie.be>

## Music

Music venues include the 'Opéra de Liège' and the 'Orchestre Philharmonique de Liège', where classical music is regularly performed.

Opéra Royal de Liège: <http://www.operaliege.be>

Orchestre Philharmonique de Liège: <http://www.opl.be>

For modern pop music, Liège has halls and pubs which regularly house concerts of various styles of music (rock, electronic, jazz,...)

La Zone: <http://www.lazone.be>

InsideOut: <http://www.insideoutclub.be>

L'Escalier: <http://www.myspace.com/escalierliege>

Jacques Pelzer Jazz Club: <http://www.jacquespelzerjazzclub.com>

Local festivals include the Jazz festival in Liège in May or the 'Fiesta du rock', not to mention the 'Fête de la Musique' in June or the 'Ardentes' and the 'Francofolies in Spa' which take place every year in July.

Jazz à Liège: <http://www.jazzaliege.be>

La Fiesta du rock: <http://www.lafiestadurock.be>

Fête de la Musique: <http://www.fetedelamusique.be>

Les Ardentes: <http://www.lesardentes.be>

Les Francofolies de Spa: <http://www.francofolies.be>

## Theatre

Liège boasts an important dramatic centre run by the French Community, the 'Théâtre de la Place'.

For 25 years, the 'Théâtre Universitaire Royal de Liège' has been organizing the International meeting of University theatre association and, who knows, you might start a career there in their workshops.

Théâtre de la Place: <http://www.theatredelaplace.be>

Théâtre Universitaire Royal de Liège (TURLg): <http://www.turlg.ulg.ac.be>

## Sports

The Province of Liège has a lot of different sports and leisure facilities for students. The 'Association sportive de l'Enseignement provincial' (ASEP), backed by the 'Service des Sports', allows students of the HEI to take part in championships and contests in indoor football, handball, table tennis, football and volley-ball.

The 'RCAE' (Royal Cercle Athlétique des Etudiants - Service des Sports de l'Université de Liège) allows any student, whether from the university or not, to learn and practice about 50 sports at an affordable price.

ASEP: <http://www.provincedeliege.be/sports>

Sports in the Province of Liège: <http://www.plgsports.be>

RCAE: <http://www.rcae.ulg.ac.be>

## Events

Fairs, village markets, flea markets,...

Whether traditional or not, life in Liège is punctuated by numerous events.

15th August festival: <http://www.tchantches.be/15aout.htm>

The October fun fair: <http://www.foiredeliege.be>

The Christmas village: <http://www.villagedenoel.be>

Markets (Batte,...): <http://www.liege.be/svcommu/commerce/marches.htm>

Flea markets (St-Pholien,...): <http://www.liege.be/svcommu/commerce/brocante.htm>

## Art of living

Discover the many restaurants in Liège : French, Italian, Greek, Chinese, Tex-Mex and other cuisines. There is always something to suit your palate.

<http://www.liege.be/restaurants>

A favourite student meeting place, the area called 'Le Carré' has masses of pubs open every day. Great fun guaranteed!

<http://www.lecarre.com>

## Food/beverage

> Boulets à la Liégeoise: typical food, meatballs, served in a thick syrupy brown sauce made with onions and "sirop de Liège" and accompanied by chunky homemade chips.

> Cuberdon: cone-shaped Belgian candy, made with gum arabic.

> Beers : Belgium counts more than 800 beers from the more sweet "pils" to the more fermented Trappist.

> Lacquement: thin waffle, made with wheat, cut in half in its thickness, filled and topped with sugar syrup candy flavored with orange blossom.

> Peket: alcohol that can be drunk pure or in various tastes of fruits and sweets.

> Sirop de Liège: syrup made from apples and pears.

> Spéculoos: traditional biscuit shaped like St Nicolas, consumed during Advent and especially during the feast of St Nicolas (December 6th).

> Waffle of Liège: richer, denser, sweeter and chewier waffle ! Featuring chunks of pearl sugar which caramelize on the outside of the waffle when baked, it's the most common type of waffle in Liège.

> Chocolate: Belgium produces 220,000 tons of chocolate per year.

### Airports

Brussels and the Walloon Region are served by three airports:

- > Brussels (Zaventem): <http://www.brusselsairport.be>
- > Charleroi (Gosselies): <http://www.charleroi-airport.com>
- > Liège (Bierset): <http://www.liegeairport.com>

### Public transport

Thanks to a remarkable network of communication routes, the Province of Liège is well served by public transport (buses and trains).

For buses, you will find all relevant information (routes, timetable, tickets, prices, offices and points of sale) on the TEC (Public Transport) website: <http://www.infotec.be>

For trains, all information about timetables and tariffs can be found on the National Railway Company of Belgium website. Designed by the famous Spanish architect Santiago Calatrava, the Liège-Guillemins station is the main station of the town and is integrated in the European high speed train network (TGV).

<http://www.b-rail.be>

<http://www.euro-liege-tgv.be>

### Banks

Many banks have an ATM from which you can withdraw money with your debit or credit card.

ATM Locator: <http://www.mastercard.com/be/personal/en/cardholderservices/atmlocations/index.html>

## *Post Office*

On the website of the Post Office you will find the list of offices and other points of sale with their addresses, opening times and services.

<http://www.post.be/site/fr/postoffice/address/index.html>

## *Pharmacies*

The following website gives you the list of all pharmacies:

<http://www.pharmacie.be>

Duty chemist: 0900 10 500 (24 hours a day - €0,50/min)

## *Hospitals*

The list of hospitals can be found at:

<http://www.hospitals.be/français/hopitaux/provlg.html>

## *Police*

Emergency number: 101

<http://www.police.be>

## *Emergency numbers*

Emergency medical service and fire brigade: 100 and 112 (European emergency number)

Police: 101

Treatment centre for poisoning cases: 070 245 245 (24 hours a day)

<http://www.poissoncentre.be>



## Cost of life

Average prices for different products and services:

### Food

Tip: shop in cheaper supermarkets (lidl, red market, colruyt, aldi) and stick to their cheap generic brand.

- >Loaf of bread (800gr) : +/- € 2.20
- >Sandwich: +/- € 3.50
- >Bag of chips: +/- €2.00
- >Cone of pasta: +/- €4.00
- >Restaurant meal: +/- €15.00
- >Fast food menu: +/- €8.00
- >Pizza: +/- €8.00
- >Beer: +/- €2.00
- >1 Liter of milk : +/- € 1.14
- >1,5 Liter of Coca-Cola : +/- € 1.49

### Transport

Bus

- >Bus ticket: €1.90
- >3-day pass : €8.00

Train

- >Go Pass 1: 1 trip at €6.00

### Leisure

Cinema ticket:

- >From €4.20 to 6.50
- >From €7.65 to 10.20 (Kinepolis)



The Kingdom of Belgium (in French: Royaume de Belgique, in Dutch: Koninkrijk België, in German: Königreich Belgien) is a northwest European state and a member of the European Union. It has a population of 11.4 million inhabitants. The capital city is Brussels.

The country shares borders with the Netherlands, Germany, Luxembourg, France and the North Sea. The longest distance between two cities i.e. La Panne and Arlon is only 318 km. It is a rather flat country, it gradually elevates in the south east to culminate at 694 metres (Signal de Botrange).

### *Languages*

Only the Brussels capital city (with 10% of the population) is officially bilingual (French and Dutch). The Walloon Region in the south (with 32% of the population) is officially monolingual (French) except for the east with the German speaking community (with 77,000 inhabitants, less than 1% of the Belgian population). The Flemish Region (with about 58% of the population) in the north is officially monolingual (Dutch).

### *Climate*

Belgium's climate, influenced by the Gulf Stream, a warm Atlantic current which makes European climates milder, has a temperate maritime climate with winds blowing from the west and frequent and heavy rainfalls. Frequent low cyclonic passages determine the instability of the weather which may be described as changeable.

## ***The Ardennes***

This region is the adventurer's paradise: a huge nature area ideal for walking and riding, picturesque villages, canoeing on the river Lesse, fishing, climbing,... there are numerous possibilities.

<http://www.wallonie-tourisme.be>

## ***Bruges***

Bruges or the Venice of the North. Since 2000, its historic centre has been on the list of Unesco World Heritage Site. Along the winding streets and romantic canals, several rich museums trace the fascinating and eventful history of the city.

<http://www.brugge.be>

## ***Brussels***

Capital city of Belgium and Europe, Brussels is appealing in its easy access, multicultural aspects and varied and picturesque districts.

<http://www.brusselsinternational.be>

<http://www.bruxelles-tourisme.be>

## ***The Belgian Coast***

A two-hour drive will take you to the Belgian Coast, the ideal place for a well-deserved rest.

<http://www.visitflanders.com>

## ***The Fagnes***

The area of the 'Fagnes' is located in a triangle formed by Eupen in the north, Malmédy in the south and Monschau (Germany) in the east. They are composed of old hills with bare moors, peat bogs and marshes. The plateau of the 'Fagnes' is a natural reserve over 4,500 hectares.

<http://www.centnaturebotrange.be>

## ***Namur***

Namur is the capital of Wallonia. You will be attracted by its well-preserved and quiet historic centre and its citadel which dominates the city and the river Meuse.

<http://www.namurtourisme.be>

## ***Spa-Francorchamps***

For centuries, nature and men have shaped the region of Stavelot, land of history and culture but above all of welcome. The racing circuit of Spa-Francorchamps, said to be the nicest in the world, has become an essential magnet for people. Since the beginning of the 1920s the circuit has witnessed fantastic stories of the heroic age when cars used to go on dirt tracks.

<http://www.spa-francorchamps.be>

## ***But remember that Belgium is famous for its beer and chocolate!***

Discover the numerous pubs and chocolate shops where you can taste these products. We have invented chips but our gastronomy does not come down to that alone. Do not hesitate to go to the gourmet restaurants!

<http://www.opt.be>

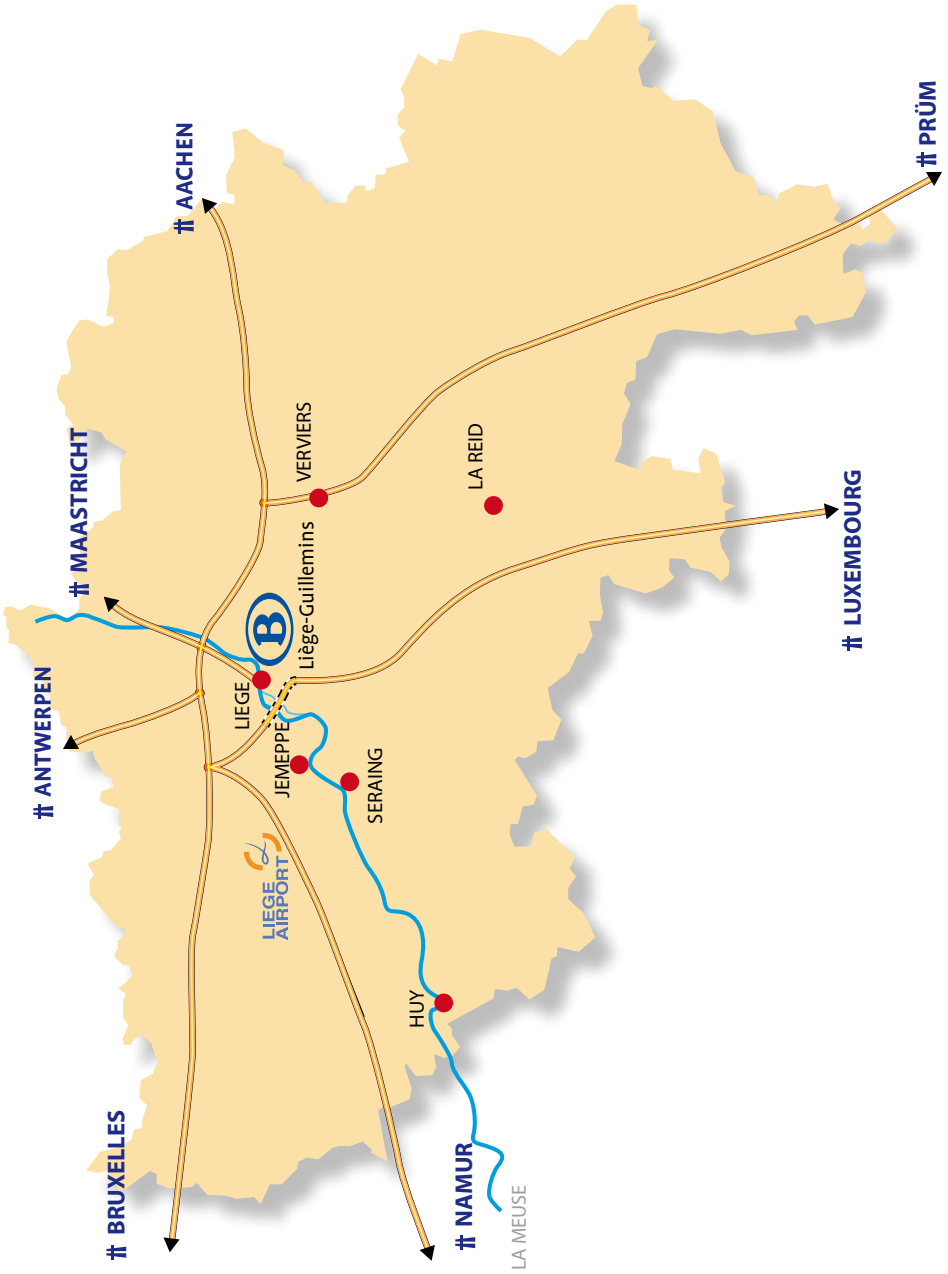
A few survival words or phrases... How do you say in French ?

Conversation	Conversation
Have you understood ?	Avez-vous compris ?
Good morning (matin) - good afternoon (après-midi)	Bonjour
(Good)bye	Au revoir
Have a nice day	Bonne journée
How much is it ?	Combien ça coûte ?
How are you ? - Fine, thank you	Comment ça va ? - Bien, merci et toi
What's your name ? - My name is ...	Comment t'appelles-tu ? - Je m'appelle
I am sorry	Je suis désolé(e)
Thanks - You are welcome	Merci - De rien
Yes - No	Oui - Non
Do you speak English ?	Parlez-vous anglais ?
Food	Alimentation
Butter	Beurre
Beef	Boeuf
Coffee	Café
Chocolate	Chocolat
Water (sparkling, still)	Eau (pétillante, plate)
Spices	Epices
French fries / chips	Frites
Cheese	Fromage
Fruit	Fruits
Waffle	Gaufre
Ham	Jambon
Milk	Lait
Vegetables	Légumes
Eggs	Oeufs
Bread	Pain
Fish	Poisson
Pepper	Poivre

Pork	Porc
Chicken	Poulet
Salt	Sel
Sugar	Sucre
Tea	Thé
Vegetarian	Végétarien
Meat	Viande
<b>Personal hygiene</b>	
<b>Hygiène personnelle</b>	
Toothbrush	Brosse à dent
Toothpaste	Dentifrice
Soap	Savon
Shampoo	Shampoing
<b>Going out</b>	
<b>Visites</b>	
'Le Carré' (the square)	"Carré"
Bottoms up !	A-fond !
Beer	Bière
'Guindaille' (+/-students'drinking party)	Guindaille
A sort of local gin	Péket
Restaurant	Restaurant
<b>Travelling</b>	
<b>Déplacements</b>	
Plane	Avion
Ship / boat	Bateau
Bus	Bus
Station (where is the station ?)	Gare (Où est la gare ?)
Left - right	Gauche - droite
Port / harbour	Port
Platform	Quai
Taxi	Taxi
Train	Train
Bicycle	Vélo
Car	Voiture

# Glossary

Accommodation	Hébergement
Youth hostel	Auberge de jeunesse
Room	Chambre
Bed and breakfast	Chambre d'hôte
Key	Clé
To sleep	Dormir
Hotel	Hôtel
Boarding (school)	Internat
Student's room	Kot
Bed	Lit
Price / charge	Prix
Bathroom (or en-suite)	Salle de bain
Visiting	Visites
Avenue	Avenue
Castle	Château
Sea-front	Digue
Church	Eglise
City hall / Town hall	Hôtel de ville
Forbidden	Interdit
Market	Marché
Museum	Musée
Open - closed	Ouvert - fermé
Square	Place
Beach	Plage
Bridge	Pont
Street	Rue



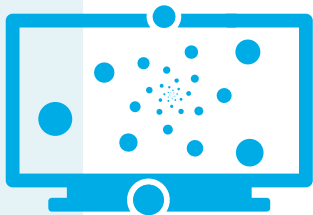












**Head office :**

Avenue Montesquieu, 6  
B - 4101 JEMEPPE (Seraing)

Green line : 0800 14 162

[www.hepl.be](http://www.hepl.be)

